

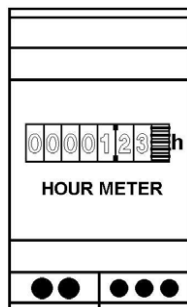
da pannello
modulari
*Panel mounting
Din-rail*



CONTAORE per C.C. e C.A.
Caratteristiche generali
D.C. and A.C. HOUR COUNTERS
General features

EH

serie
series



7 cifre / 7 digits

Tensione alternata: 5+2 cifre 99999,99h / *alternate voltage: 5+2 digits 99999,99h*

Tensione continua: 6+1 cifre 999999,9h / *direct voltage: 6+1 digits 999999,9h*

Costruiti secondo norme VDE, S / *Made according to VDE, S*

Indicatore visivo di funzionamento, senza azzeramento / *operating indicator, without zero-reset*

Frequenza nominale (versione per c.a.): 50 o 60Hz / *rated frequency (a.c. version): 50 or 60Hz*

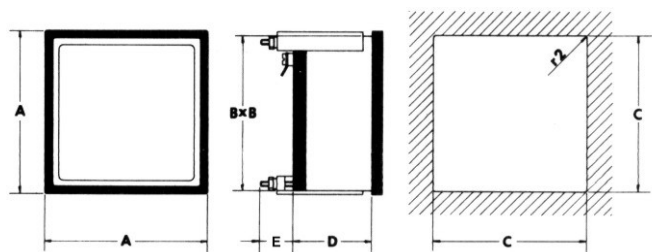
Tensione di prova: 2kV per 1' a 50Hz / *test voltage: 2kV for 1' 50Hz*

Autoconsumo: Vcc ≤ 2W circa, Vca ≤ 2VA circa / *consumption: Vdc: ≤ 2W about, Vac ≤ 2VA about*

Custodia in materiale plastico non infiammabile, UL94 V-0 / *Non-flammable plastic material case, UL94 V-0*

A richiesta: coprimorsetti, esecuzione tropicalizzata / *on request: terminals cover, tropicalized execution*

DIMENSIONI D'INGOMBRO / OVERALL DIMENSIONS



Modello Model	A	B	C	D	E	Peso Weight
	[mm]	[mm]	[mm]	[mm]	[mm]	[kg]
E48H	48	45	45, ∅ 50	28	---	0,2
E72H	72	67	68	44	18	0,3
E96H	96	91	92	44	18	0,3
E48Hcc	48	45	45, ∅ 50	28	---	0,2
E72Hcc	72	67	68	44	18	0,3
E96Hcc	96	91	92	44	18	0,3

TENSIONE ALTERNATA ALTERNATE VOLTAGE	48 x 48	72 x 72	96 x 96	2 Moduli 2 Modules
---	---------	---------	---------	-----------------------

Ingresso c.a. / *a.c. input* frequenza 50 o 60Hz / *frequency 50 or 60Hz*

24V - 48V - 115V - 230V - 400V (±10%)	E48H	E72H	E96H	ECMH
---------------------------------------	-------------	-------------	-------------	-------------

TENSIONE CONTINUA DIRECT VOLTAGE	48 x 48	72 x 72	96 x 96	2 Moduli 2 Modules
-------------------------------------	---------	---------	---------	-----------------------

Ingresso c.c. / *d.c. input*

10 ... 80V	E48Hcc	E72Hcc	E96Hcc	ECMHcc
------------	---------------	---------------	---------------	---------------

DIMENSIONI D'INGOMBRO MODULARE / MODULAR OVERALL DIMENSIONS

