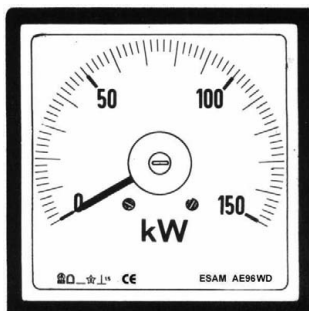


scala
intercambiabile
*interchangeable
scale*



WATTMETRI e VARMETRI per C.A. Caratteristiche generali *A.C. WATTMETERS and VARMETERS General features*

AE serie
series



Scala / Scale 240°

Costruiti secondo norme CEI e IEC / *Made according to CEI and IEC*
Precisione: $\pm 1,5\%$ del valore di fondo scala (temperatura di riferimento 20°C)

Accuracy: $\pm 1,5\%$ of full scale value (reference temperature 20°C)

Tensione di esercizio: 600V / *operating voltage: 600V*

Tensione di prova: 2kV per 1' a 50Hz / *test voltage: 2kV for 1' 50Hz*

Completo di accessorio convertitore **non isolato** - esecuzione standard autoalimentato

*Complete with **non insulated** transducer - standard execution self-powered*

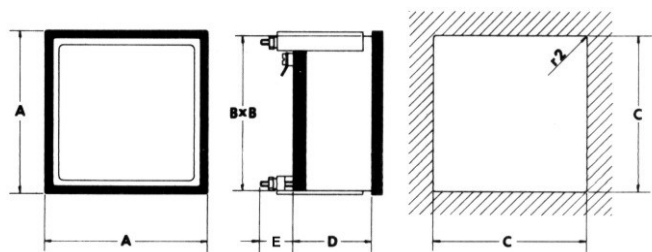
Autoconsumo accessorio convertitore / *transducer consumption:* amperometrico / *amperometric* $\leq 0,8VA$
voltmetrico / *voltmetric* $\leq 0,1VA$

alimentazione ausiliaria / *aux. power* $\leq 4VA$

Custodia in materiale plastico non infiammabile, UL94 V-0 / *Non-flammable plastic material case, UL94 V-0*

A richiesta: esecuzione tropicalizzata / *on request: tropicalized execution*

DIMENSIONI D'INGOMBRO / OVERALL DIMENSIONS



Modello <i>Model</i>	A	B	C	D	E	Peso <i>Weight</i>
	[mm]	[mm]	[mm]	[mm]	[mm]	[kg]
AE48...	48	44	45	44	18	0,2
AE72...	72	67	68	44	18	0,3
AE96...	96	91	92	44	18	0,4
AE144...	144	136	138	53	---	0,8

WATTMETRI <i>WATTMETERS</i>	48 x 48	72 x 72	96 x 96	144 x 144	Schema <i>Diagram</i>
--------------------------------	---------	---------	---------	-----------	--------------------------

circuito / *circuit*

monofase / <i>single-phase</i>	AE48WS	AE72WS	AE96WS	AE144WS	S715-0
trifase 3 fili carico equilibrato / <i>balanced 3 wires three-phase</i>	AE48WY	AE72WY	AE96WY	AE144WY	S716-0
trifase 3 fili carico squilibrato ARON / <i>ARON unbal.3 wires 3-phase</i>	AE48WD	AE72WD	AE96WD	AE144WD	S717-0
trifase 4 fili carico equilibrato / <i>balanced 4 wires three-phase</i>	AE48WS	AE72WS	AE96WS	AE144WS	S718-0
trifase 4 fili carico squilibrato / <i>unbalanced 4 wires three phase</i>	AE48WT	AE72WT	AE96WT	AE144WT	S719-0

VARMETRI <i>VARMETERS</i>	48 x 48	72 x 72	96 x 96	144 x 144	Schema <i>Diagram</i>
------------------------------	---------	---------	---------	-----------	--------------------------

circuito / *circuit*

monofase / <i>single-phase</i>	AE48VS	AE72VS	AE96VS	AE144VS	S715-0
trifase 3 fili carico equilibrato / <i>balanced 3 wires three-phase</i>	AE48VY	AE72VY	AE96VY	AE144VY	S716-0
trifase 3 fili carico squilibrato ARON / <i>ARON unbal.3 wires 3-phase</i>	AE48VD	AE72VD	AE96VD	AE144VD	S717-0
trifase 4 fili carico equilibrato / <i>balanced 4 wires three-phase</i>	AE48VS	AE72VS	AE96VS	AE144VS	S718-0
trifase 4 fili carico squilibrato / <i>unbalanced 4 wires three phase</i>	AE48VT	AE72VT	AE96VT	AE144VT	S719-0

Valori d'ingresso accessorio convertitore / *Input transducer values*

tensione nominale [V] / *rated voltage [V]:* 100 – 115 – 230 – 400

corrente nominale [A] / *rated current [A]:* 1 – 5

frequenza nominale [Hz] / *rated frequency [Hz]:* 50 – 60

scala 90° - 240°

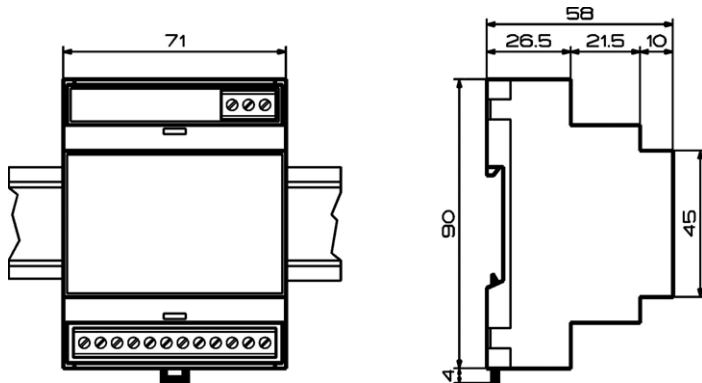


90° - 240° scale

WATTMETRI, VARMETRI, COSFIMETRI
Schemi di inserzione - dimensioni accessorio convertitore
WATTMETERS, VARMEETERS, POWER FACTOR METERS
Wiring diagrams, transducer dimensions

E serie
AE series

ACCESSORIO CONVERTITORE
TRANSUDCER



Peso: circa 0,8 kg. / Weight: 0,8 kg. about

