

scala 90° - 240°



90° - 240° scale

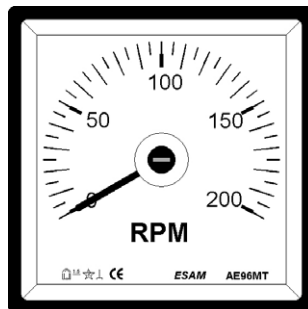
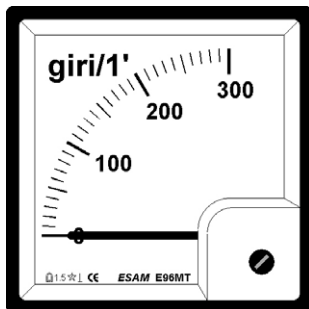
TACHIMETRI

Caratteristiche generali

TACHOMETERS

General features

E serie
AE series



Scala / Scale 90° - 240°

Costruiti secondo norme CEI e IEC / Made according to CEI and IEC

Precisione: ± 1,5% del valore di fondo scala (temperatura di riferimento 20°C)

Accuracy: ± 1,5% of full scale value (reference temperature 20°C)

Tensione di esercizio: 600V / operating voltage: 600V

Tensione di prova: 2kV per 1' a 50Hz / test voltage: 2kV for 1' 50Hz

Autoconsumo voltmetrico (Vcc) da 0,5 a 600V: 1mA (1000 Ω/V) circa

Voltmetric consumption (Vdc) from 0.5 to 600V: 1 mA (1000 Ω/V) about

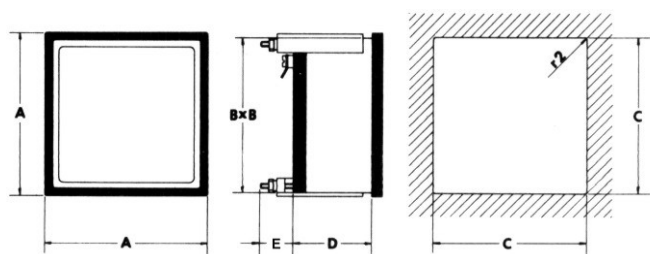
Autoconsumo voltmetrico (Vca) da 0,5 a 600V: ≤ 1,5VA circa

Voltmetric consumption (Vac) from 0.5 to 600V: ≤ 1,5VA about

Custodia in materiale plastico non infiammabile, UL94 V-0 / Non-flammable plastic material case, UL94 V-0

A richiesta: coprimorsetti, esecuzione tropicalizzata / on request: terminals cover, tropicalized execution

DIMENSIONI D'INGOMBRO / OVERALL DIMENSIONS



Modello Model	A	B	C	D	E	Peso Weight
	[mm]	[mm]	[mm]	[mm]	[mm]	[kg]
E/AE48M...	48	44	45	44	18	0,2
E/AE72M...	72	67	68	44	18	0,3
E/AE96M...	96	91	92	44	18	0,4
E/AE144M...	144	136	138	53	---	0,8

SCALA 90° / 90° SCALE	48 x 48	72 x 72	96 x 96	144 x 144
-----------------------	---------	---------	---------	-----------

Ingresso c.c. / d.c. input scala da precisare / scale to specify

dinamo tachimetrica max. 600Vcc / tachometer dynamo max 600Vdc	E48MT	E72MT	E96MT	E144MT
--	--------------	--------------	--------------	---------------

Ingresso c.a. / a.c. input scala da precisare / scale to specify

alternatore tachimetrico max. 600Vca / tachometer alternator max 600Vac	E48MTR	E72MTR	E96MTR	E144MTR
---	---------------	---------------	---------------	----------------

con trimmer regolazione fondo scala / with full scale adjustment trimmer

SCALA 240° / 240° SCALE	48 x 48	72 x 72	96 x 96	144 x 144
-------------------------	---------	---------	---------	-----------

Ingresso c.c. / d.c. input scala da precisare / scale to specify

dinamo tachimetrica max. 600Vcc / tachometer dynamo max 600Vdc	AE48MT	AE72MT	AE96MT	AE144MT
--	---------------	---------------	---------------	----------------

Ingresso c.a. / a.c. input scala da precisare / scale to specify

alternatore tachimetrico max. 600Vca / tachometer alternator max 600Vac	AE48MTR	AE72MTR	AE96MTR	AE144MTR
---	----------------	----------------	----------------	-----------------

con trimmer regolazione fondo scala / with full scale adjustment trimmer