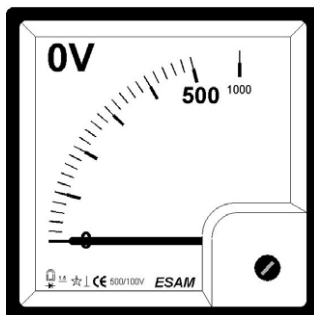




**ZERO VOLTMETRI**  
**Caratteristiche generali**  
**ZERO VOLTMETERS**  
**General features**



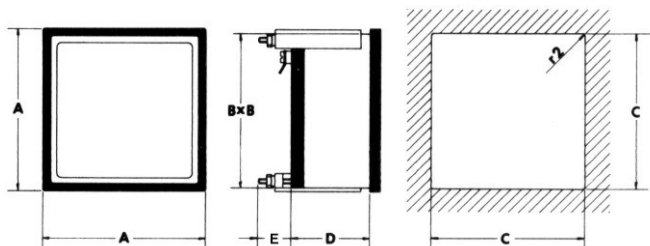
serie  
 series



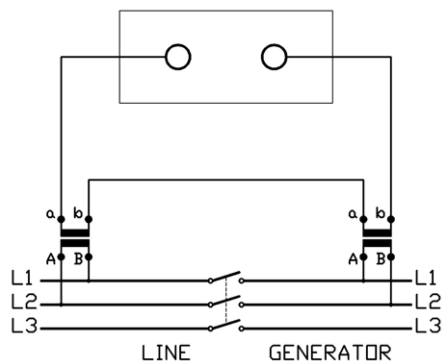
**E96ZV**

Costruiti secondo norme CEI e IEC / *Made according to CEI and IEC*  
 Precisione:  $\pm 1,5\%$  del valore di fondo scala (temperatura di riferimento 20°C)  
*Accuracy:  $\pm 1,5\%$  of full scale value (reference temperature 20°C)*  
 Tensione di esercizio: 600V / *operating voltage: 600V*  
 Tensione di prova: 2kV per 1' a 50Hz / *test voltage: 2kV for 1' 50Hz*  
 Sovraccarico permanente / *continuous overload: 1,2Vn*  
 Sovraccarico istantaneo (1 sec.) / *instantaneous overload (1 sec.): 2Vn*  
 Autoconsumo / *consumption:  $\leq 2VA$*   
 Custodia in materiale plastico non infiammabile, UL94 V-0 / *Non-flammable plastic material case, UL94 V-0*  
 A richiesta: coprimorsetti, esecuzione tropicalizzata / *on request: terminals cover, tropicalized execution*

**DIMENSIONI D'INGOMBRO / OVERALL DIMENSIONS**



Modello Model	A	B	C	D	E	Peso Weight
	[mm]	[mm]	[mm]	[mm]	[mm]	[kg]
<b>E96ZV</b>	96	91	92	44	18	0,3



Voltmetri per inserzione diretta o su TV <i>Voltmeters for direct insertion or on VT</i>	
portata diretta o su TV/100 o /110 <i>direct range or on VT/100 or /110</i>	scala normale <i>normal scale</i>
[V]	[V]
100	100 (200)
150	150 (300)
250	250 (500)
300	300 (600)
500	500 (1000)
600	600 (1200)
220/100 o / or 220/110	300 (600)
380/100 o / or 380/110	500 (1000)
400/100 o / or 400/110	500 (1000)
500/100 o / or 500/110	600 (1200)
xxx/100	xxx (2xxx)
xxx/110	xxx (2xxx)