



INTERFACCIA TRA RS485 ed ETHERNET Modbus RTU ↔ Web Browser

MT-WebSCADA

RS485 to ETHERNET GATEWAY Modbus RTU ↔ Web Browser

L'interfaccia ESAM M-WebSCADA incorpora un web server che permette di gestire allarmi, visualizzare e loggare parametri da dispositivi dotati di porta seriale RS485 con protocollo Modbus RTU (es. E2002, E92002, E742002, IDC806, E1100, SID8MP...) tramite un comune web browser (es. Internet Explorer o Firefox) **senza** software aggiuntivi.

MT-WebSCADA agisce inoltre come gateway trasparente tra Modbus RTU Master e Modbus TCP slave (come il modello MTRTU-TCP).

The ESAM MT-WebSCADA gateway has an embedded web server to handle alarm management, logging and display data between serial Modbus RTU devices (ex. E2002, E92002, E72002, IDC806, E1100, SID8MP...) and any web browser (e.g. Internet Explorer or Firefox) **without** additional software.

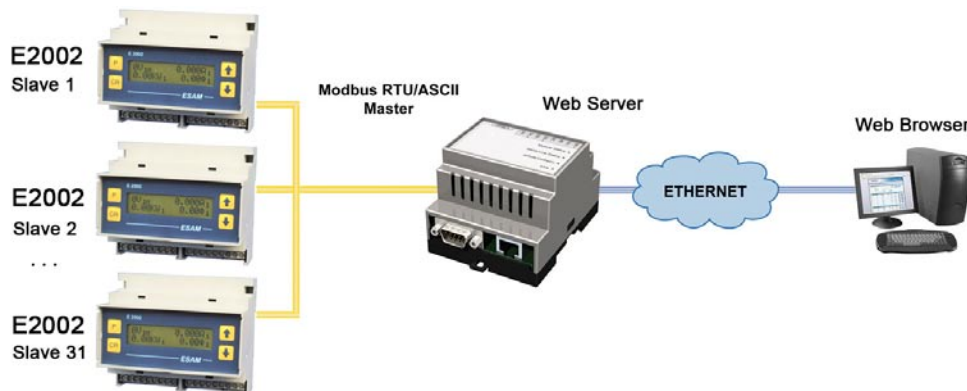
MT-WebSCADA acts as a pure transparent connection among Modbus RTU master devices and Modbus slave devices (as per mod. MTRTU-TCP)

- Semplice interfaccia grafica di configurazione e costruzione pagine web
- Visualizzazione di max. 30 pagine con 20 valori per pagina
- Invio file di log tramite posta elettronica (e-mail)
- Gestione modem esterno (GSM/GPRS/PSTN) per invio log o allarmi
- Modbus RTU: RS232/485 115.2kbit/sec., Ethernet 10/100Mbit/sec.
- Supporto DHCP
- Supporta 31 Modbus slaves
- Software configurabile attraverso porta seriale RS232/485
- Password di sicurezza
- Montaggio su guida DIN
- Led di segnalazione per rete e interfaccia seriale
- Stato della comunicazione visibile da pagina web

- Graphical user interface and flexible management of configuration, are easy to work with.
- Display max. 30 pages with 20 variables / page
- Support for sending log-files with email
- Support for external GSM/GPRS/PSTN modems
- RS232/485 Modbus RTU 115,2kbit/sec., 10/100 Mbit/sec. Ethernet
- DHCP support
- Supports 31 Modbus slaves
- Software configurable RS232/485 port
- Password for higher security
- DIN rail mounting
- Indicators for network and serial interface
- Communication status available to view on web page

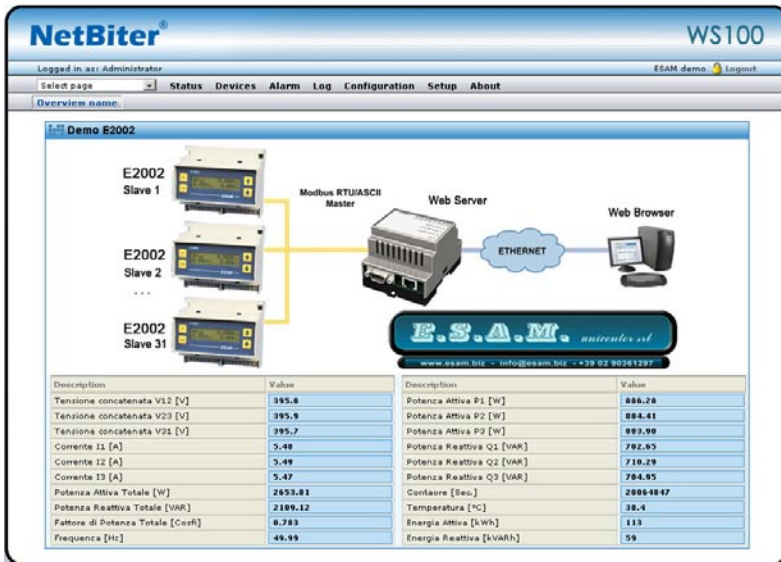
A ciascuna interfaccia ESAM MT-WebSCADA si possono connettere 31 dispositivi Modbus slave, e si possono avere fino a 10 connessioni simultanee dal lato Ethernet.

Each ESAM MT-WebSCADA can link up to 31 Modbus slave devices, and you can have 10 simultaneous connections on the Ethernet side.

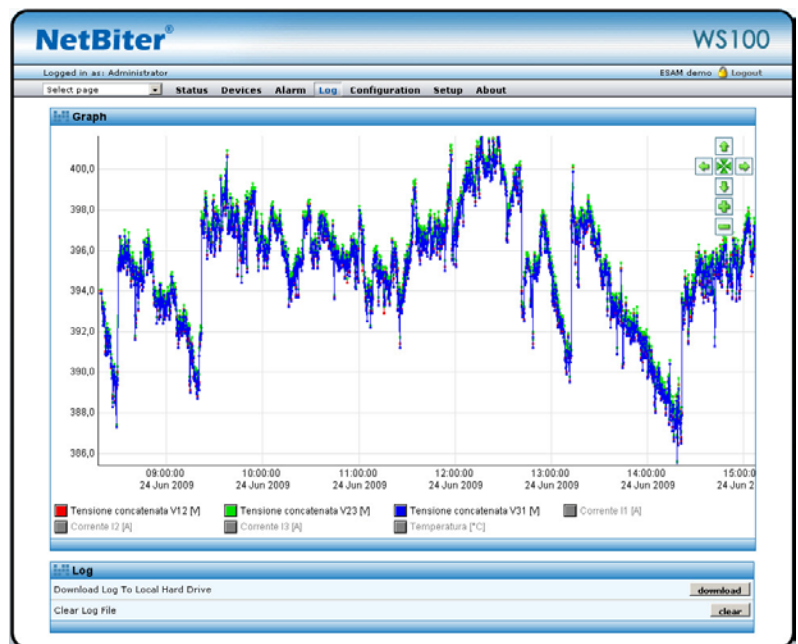


CARATTERISTICHE GENERALI / GENERAL FEATURES

Ethernet	connessione / connection: RJ45 protocollo / protocol: Modbus /TCP a vite / screw terminals velocità / baud rate: 10/100 Mbit/sec
Porta seriale Serial port	connessione / connection: RS232 DSub 9 RS232/RS485 RJ12 protocollo / protocol: Modbus RTU velocità: configurabile fino a 115,2 kbit/sec baudrate: configurabile up to 115,2 kbit/sec
RS232	TxD, RxD, GND, RTS, CTS, CD, DTR, DSR, RI
RS485	Data+, Data-, GND
Segnalazioni a led Led indicators	collegamento Ethernet, comunicazione seriale, Stato Ethernet Link, serial communication, Status
Configurazione / Configuration	da remoto attraverso Ethernet / remotely configurable over Ethernet
Parità / Parity	nessuna, pari, dispari / none, even, odd
Data Bits	7, 8
Stop Bits	1,2
Custodia (dimensioni) Housing (dimensions)	4 moduli DIN 35, IP20 in plastica (90 x 70 x 58 mm.) 4 modules, DIN 35, IP20 plastic case(90 x 70 x 58mm.)
Montaggio / Mounting	su profilato EN 50022-35 / rail DIN EN50022-35
Alimentazione ausiliaria / Auxiliary power	9 ... 24Vac/dc - consumo / consumption 50mA @ 24Vdc



Esempio visualizzazione valori misurati
Example of measured values



Esempio visualizzazione trend
Example of trend view

Microsoft Excel - log

	A	B	C	D	E	F	G	H	I	J
1	Date	Time	Tensione V12 [V]	Tensione V23 [V]	Tensione V31 [V]	Corrente I1 [A]	Corrente I2 [A]	Corrente I3 [A]	Temperatura [°C]	
2	23/06/2009	8:18:50	397.7	397.8	397.6	5.56	5.57	5.55	24.8	
3	23/06/2009	8:19:00	398.1	398.3	398	5.58	5.58	5.56	24.8	
4	23/06/2009	8:19:10	398.5	398.6	398.4	5.58	5.59	5.57	24.8	
5	23/06/2009	8:19:20	398.5	398.7	398.5	5.54	5.55	5.52	24.9	
6	23/06/2009	8:19:30	397.3	397.3	397.2	5.56	5.57	5.54	24.9	
7	23/06/2009	8:19:40	397.2	397.3	397.1	5.55	5.56	5.53	25.1	
8	23/06/2009	8:19:50	399.1	399.2	399	5.5	5.51	5.58	25.2	
9	23/06/2009	8:20:00	399.5	399.7	399.4	5.62	5.62	5.6	25.2	
10	23/06/2009	8:20:10	399.7	399.7	399.6	5.61	5.62	5.6	25.3	
11	23/06/2009	8:20:20	399.8	400	399.7	5.62	5.63	5.6	25.3	
12	23/06/2009	8:20:30	400.2	400.4	400.4	5.63	5.64	5.61	25.4	
13	23/06/2009	8:20:40	400.2	400.3	400.1	5.62	5.63	5.6	25.4	
14	23/06/2009	8:20:50	400.3	400.4	400.2	5.62	5.62	5.59	25.5	
15	23/06/2009	8:21:00	399.9	400.1	399.8	5.61	5.62	5.59	25.5	
16	23/06/2009	8:21:10	399.5	399.8	399.5	5.61	5.61	5.59	25.6	
17	23/06/2009	8:21:20	400.5	400.3	400.3	5.62	5.63	5.6	25.6	
18	23/06/2009	8:21:30	400.2	400.4	400.3	5.62	5.63	5.6	25.6	
19	23/06/2009	8:21:40	399.8	399.8	399.6	5.61	5.62	5.59	25.6	
20	23/06/2009	8:21:50	399.6	399.7	399.5	5.61	5.62	5.59	25.6	
21	23/06/2009	8:22:00	399.9	399.2	398.9	5.6	5.61	5.59	25.7	
22	23/06/2009	8:22:10	399.2	399.3	399.1	5.61	5.62	5.58	25.7	
23	23/06/2009	8:22:20	399	399.2	399	5.6	5.61	5.58	25.7	
24	23/06/2009	8:22:30	399.3	399.5	399.4	5.61	5.61	5.58	25.8	
25	23/06/2009	8:22:40	399.1	399.3	399.1	5.61	5.61	5.59	25.8	
26	23/06/2009	8:22:50	399.5	399.6	399.4	5.61	5.61	5.58	25.8	
27	23/06/2009	8:23:00	399.4	399.5	399.4	5.61	5.6	5.58	25.9	
28	23/06/2009	8:23:10	397.1	397.2	397	5.66	5.66	5.52	25.8	
29	23/06/2009	8:23:20	396.8	397	396.4	5.52	5.53	5.51	25.9	
30	23/06/2009	8:23:30	397.5	397.4	397.4	5.55	5.56	5.53	25.9	
31	23/06/2009	8:23:40	397.9	398.1	397.9	5.56	5.56	5.54	25.9	
32	23/06/2009	8:23:50	397.9	398	397.7	5.67	5.58	5.64	25.9	
33	23/06/2009	8:24:00	398.1	398	398	5.56	5.57	5.54	26	
34	23/06/2009	8:24:10	397.9	398.1	397.8	5.56	5.58	5.54	26.1	
35	23/06/2009	8:24:20	397.1	397.3	397	5.54	5.55	5.52	26	

Esempio file log (aperto con Excel)
Example of log file (opened with Excel)